

# Lynx Transporter-Semi



The Adept Lynx™ Semi Transporter combines a Lynx autonomous indoor vehicle (AIV) with a multi waferpod carrier configured to move wafer pods throughout a semiconductor fab. It is designed to safely transport up to four wafer pods in a dynamic cleanroom environment while operating safely and collaboratively alongside people.

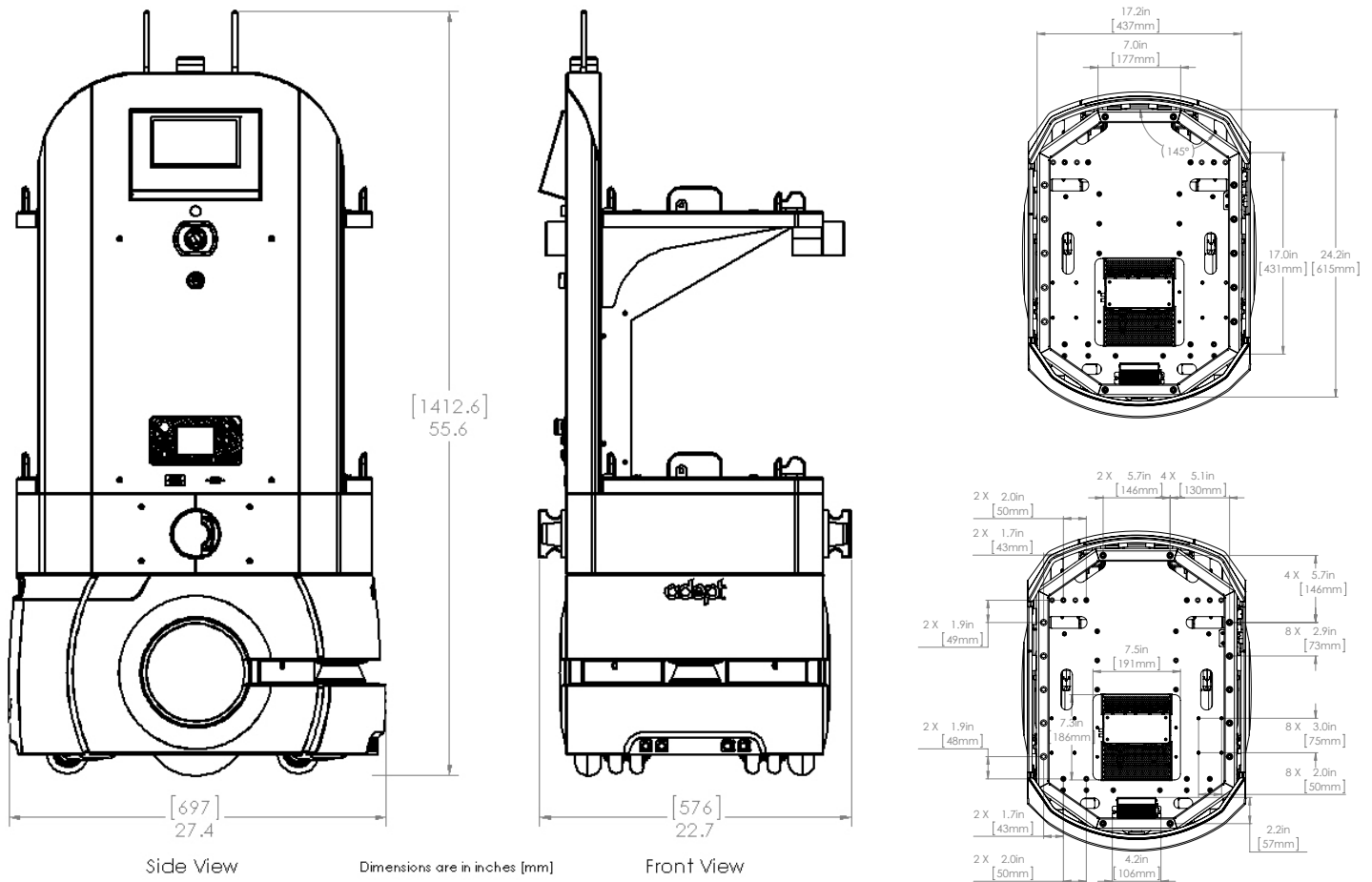
The on-board intelligence of the vehicle eliminates the need for additional infrastructure such as tracks, reflectors or magnets. The Lynx Semi Transporter improves production yield by eliminating human-generated dust particles and by following instructions from the fab production software system, ensuring no errors in the location of wafer pods. It enables implementation of lean methodologies in the workflow and allows redeployment of a limited labor pool to higher value-add tasks.

## Specifications

Weight	100 kg (220 lbs)
Payload	
Level Surface	20 kg (44 lbs)
Power	
Battery	22-29 VDC LiFePO <sub>4</sub>
Capacity	60 Ah
Run Time	10 hours (continuous)
Recharge Time	3.5 hours (5:1 ratio)
Battery Life	7 years
Charging Station	Automatic (optional)
Mobility Overview	
Maximum Speed	1800 mm/sec (67 in./sec)
Tire Composition	Non-Marking Rubber
Suspension	Passive
Steering	Differential
Turning Radius	0
Swing Radius	343 mm (13.5 in)
Traversable Gap	15 mm (0.6 in)
Traversable Sill	15 mm (0.6 in)
CE, SEMI, VDI, ANSI B56.5	
Payload	
4 SMIF Pods for the automated exchange of	
150 or 200 mm masks and wafers	
Load port compatible: SEMI E15	

# ADEPT LYNX TRANSPORTER-SEMI

## Dimensions: Adept Lynx Transporter-Semi (mm)



## The Adept Lynx Transporter-Semi system includes the following:

- Adept Lynx™ mobile platform
- Graphical user interface
- 22-29 VDC battery pack
- Covers are removable without tools for maintenance
- User interface wheel indicating vehicle intent and status
- Programmable voice and audio prompts
- Queue management software

## Options and Peripherals:

- Class 100 Cleanroom
- MobilePlanner™ and MobileEyes™ software package
- Enterprise Manager Lite
- Call buttons
- Door interface



**Adept Technology, Inc.** 5960 Inglewood Drive, Pleasanton, CA 94588

Tel: 925-245-3400 Fax: 925-960-0452 Email: [info@adept.com](mailto:info@adept.com)

[www.adept.com](http://www.adept.com)

Specifications subject to change without notice.

©2014 Adept Technology, Inc. ALL RIGHTS RESERVED. The information provided in this communication or document is the property of Adept Technology, Inc. and is protected by copyright and other intellectual property laws. In addition, any references to any Adept Technology, Inc. products are the marks and property of Adept Technology, Inc. [and may be registered trademarks]. All other trademarks or tradenames are the property of their respective holders.

## Downloads:

Download CAD files for the Adept Lynx Transporter-Semi robot from <http://www.adept.com/support/downloads/file-search>