

Your Source for
GASKETING & SEALING
ELASTOMERIC
ADHESIVES & SEALANTS

- Products with “Flextec® Technology” are based on Henkel’s proprietary polymer backbone
- Exhibit high resiliency while maintaining high tensile strength and good adhesion to many substrates – all without the use of a primer
- Isocyanate and solvent-free, noncorrosive, and compatible with most paint systems
- Begin to cure into a strong thermoset polymer when in contact with ambient moisture
- Ideal for bonding and sealing a multitude of substrates, as well as many applications where silicones cannot be used due to their incompatibility with paint systems



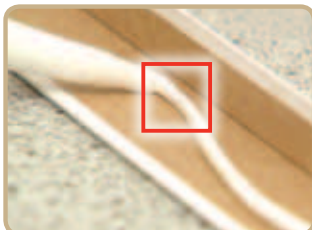
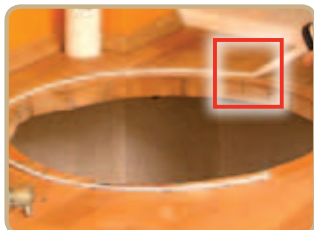
Source's PICK

Loctite® 5510™ Adhesive/Sealant

BLACK, GREY AND WHITE

A multipurpose product based on Flextec® Technology suitable for many adhesive and sealant applications. It offers a fast skin time and cures to a tack-free surface. Its outstanding adhesion and toughness make it ideal for bonding and sealing between dissimilar substrates that are subjected to joint movement or impact.

Item #	1073344	300 ml cartridge	White
	1194277	50 lb. pail	White
	1073346	300 ml cartridge	Grey
	1194276	50 lb. pail	Grey
	1073347	300 ml cartridge	Black
	1197374	50 lb. pail	Black



Loctite® 5512™ Adhesive Sealant

High elongation and tensile strength give this product the best of both worlds. This product has good adhesion to many substrates, as well as good impact and peel resistance.

Item #	41380	300 ml cartridge
	41387	5 gallon pail

Source's PICK

Loctite® 5570™ Adhesive

CLEAR AND WHITE

A strong bonding adhesive based on Flextec® Technology with elastic properties for bonding dissimilar substrates. High initial tack and fast setting make it ideal for high productivity applications.

Item #	1073348	300 ml cartridge	White
	1197375	50 lb. pail	White
	1073349	300 ml cartridge	Clear
	1197372	40 lb. pail	Clear

Loctite® 5572™ Adhesive

This product exhibits the highest shear strength on a majority of substrates compared to the other products in this line.

Item #	41379	300 ml cartridge
	41386	5 gallon pail

Loctite® 5590™ Adhesive

A two-component adhesive for elastic bonding where the curing rate of one-component adhesives is too slow. The mixed adhesive is non-sag, has high tack and fast set time. The cured product provides durable bonding to a wide variety of substrates.

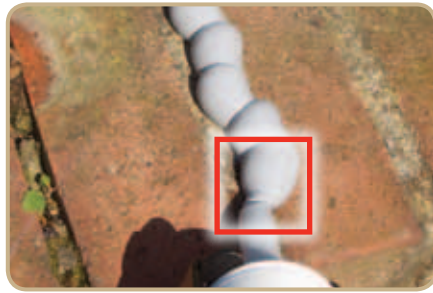
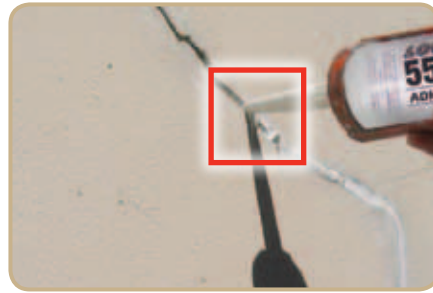
Item #	1091896	400 ml dual cartridge
--------	---------	-----------------------



FLEXTEC® TECHNOLOGY

Flextec® Technology indicates the use of Henkel’s proprietary polymers to formulate outstanding handling and performance into adhesives and sealants. These non-silicone polymers are designed for primerless adhesion, speed and durability in all elastomeric applications.





- [Applications]**
- General Assembly
 - Seal Expansion Joints
 - Seal Precast Panels
 - Seal Air or Water Penetration Joints
 - Bond Trim and Molding
 - Bond Roof or Side Panels to Tubular Frames
 - Seal Doors, Windows and Skylights
- [Industries]**
- Seal Wall Penetrations
 - Bond Flooring to Sub-Floor or Metal Frames
 - Seal Siding, Roofing and Gutters
 - Appliances
 - HVAC
 - Signage/Displays
- General Maintenance
 - Specialty Vehicles
 - Agricultural Vehicles
 - Trailers and Buses
 - Recreational Vehicles
 - Manufactured Housing
 - Metallic or Wooden Construction
- APPLICATIONS & INDUSTRIES**

[Loctite® Elastomeric Adhesives & Sealants Properties Chart]

LOCTITE® PRODUCT	ITEM NUMBER	PACKAGE TYPE/SIZE	COLOR	EXTRUSION RATE** (G MIN.)	CURE METHOD	SKIN TIME (MIN.)	TEMPERATURE RANGE	HARDNESS SHORE A	TENSILE STRENGTH* (psi)	ELONGATION AT BREAK (%)	SHEAR STRENGTH ON STEEL (psi)	
ELASTOMERIC ADHESIVES	5510™	1073344 50 lb. pail	White	200	Moisture	30	-40°F (-40°C) to 200°F (93°C)	40	250	300	250	
		1073346 50 lb. pail	Grey									
		1073347 50 lb. pail	Black									
	5512™	41380 41387	300 ml cartridge 5 gallon pail	Black	90	Moisture	5	-40°F (-40°C) to 200°F (93°C)	55	390	500	270
	5570™	1073348 1197375	300 ml cartridge 50 lb. pail	White	150	Moisture	30	-40°F (-40°C) to 200°F (93°C)	55	380	230	400
		1073349 1197372	300 ml cartridge 40 lb. pail	Clear	110		20		45	250	140	280
	5572™	41379 41386	300 ml cartridge 5 gallon pail	Black	90	Moisture	12	-40°F (-40°C) to 200°F (93°C)	55	475	225	425
5590™	1091896	400 ml dual cartridge	Black	N/A	Two-Component Static Mix	25	-40°F (-40°C) to 200°F (93°C)	60	435	130	290	
5590™ PART A	1091892	5 gallon pail	Black									
5590™ PART B	1091893	5 gallon pail	Black									

ITEMS IN RED = Source's PICK or NEW * Grit-blasted steel. ** Extrusion rate at 73°F, 3.5 mm diameter, 3 bar, for 15 seconds.

Your Source for GASKETING & SEALING **ELASTOMERIC EQUIPMENT**

LOCTITE® PRODUCT	ITEM NUMBER	PRESSURE REGULATION	USED TO DISPENSE	PACKAGE TYPE & SIZES	VISCOSITY RANGE	LOW LEVEL SENSING	CONSUMABLES – DISPENSE ACCESSORIES
PNEUMATIC CARTRIDGE DISPENSING							
	HIGH PRESSURE 300 ML BENCHTOP CARTRIDGE DISPENSER	1046901	0 to 725 psi	Silicone, Polyurethane, MS Polymer Adhesives	300 ml cartridges	10,000 to 1,000,000 cP	Yes Use with High Pressure Dispense Valve (sold separately) – see below
	PNEUMATIC HANDHELD 300 ML DISPENSER	1294304	0 to 100 psi	Gel Cyanoacrylates, Anaerobic Gasketing, Light Cure/Acrylics, Silicones	300 ml cartridges 250 ml tubes	Medium to High	No Cartridge Accessories – Page 183

LOCTITE® PRODUCT	ITEM NUMBER	TYPE	VISCOSITY RANGE	DISPENSE PATTERNS	USED TO DISPENSE	STROKE ADJUSTMENT	SUCK-BACK	CONSUMABLES – DISPENSE ACCESSORIES
HIGH VISCOSITY FLUID & PASTE VALVES								
	HIGH PRESSURE DISPENSE VALVE – 50 BAR	1049138	High Viscosity Fluid and Paste Valves	10,000 to 1,000,000 cP	Drop, Bead	Silicones, MS Polymers, Urethanes	Yes	Yes Dispense Tips and Accessories – Pages 182-186
	HIGH PRESSURE DISPENSE VALVE – 150 BAR	1153502	High Viscosity Fluid and Paste Valves	500,000 to 2,000,000 cP	Drop, Bead	Silicones, MS Polymers, Urethanes	Yes	No Dispense Tips and Accessories – Pages 182-186